

## Connecting the WDA-2000 to a mobile computer, Windows Mobile 6.0

### Initial Setup – step 1

Before attempting to establish a connection between the WDA and your mobile computer, be sure the TVA is turned OFF, then plug in the WDA.

After the WDA is plugged in, turn the TVA on.



### Initial Setup – step 2


Set the TVA to **enhanced** Probe display mode by going to 2=Setup, 5=Hdware, 1=Probe display then choose option: 2=Enh

Go back to the main menu by pressing the exit button and choose 1=Run to startup and light the TVA.

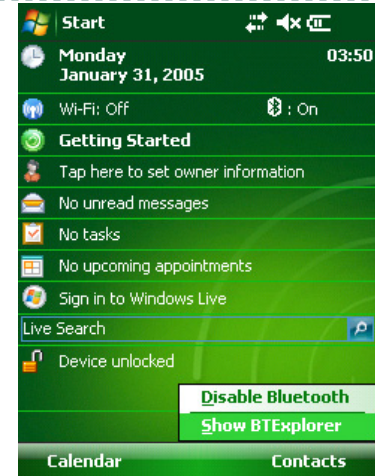


## Connecting the WDA-2000 to a mobile computer, Windows Mobile 6.0

### Setting up Bluetooth® - Step 1

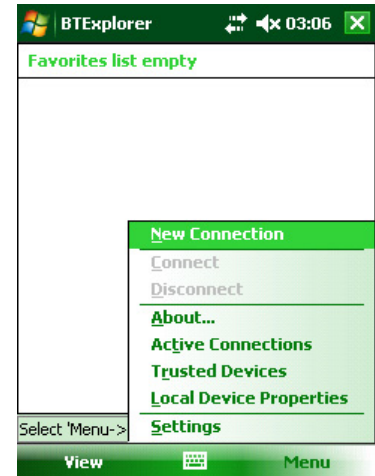
Tap on the Bluetooth® icon  on the bottom right side of the screen.

Select **Show BTEplorer**



### Setting up Bluetooth® - Step 2

Tap on Menu and select **New Connection**



## Connecting the WDA-2000 to a mobile computer, Windows Mobile 6.0

### Setting up Bluetooth® - Step 3

On the dropdown menu  
select **Associate Serial Port**

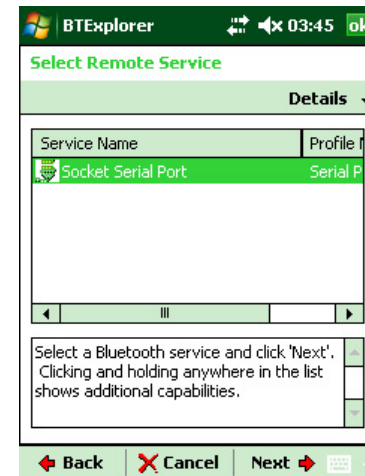
Tap **Next** ->



### Setting up Bluetooth® - Step 4

Tap and hold within the list box until the menu displays. Select **Discover Devices**

After the discovery process is complete high-  
light the device number that matches the  
number on your WDA and Tap **Next** ->

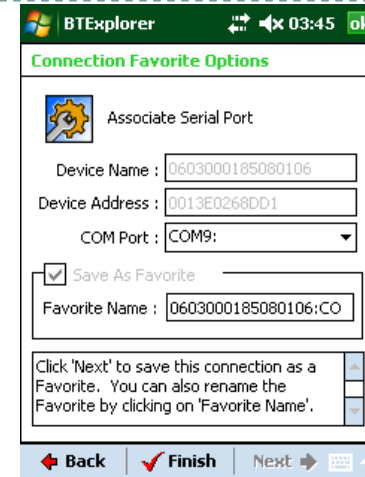


## Connecting the WDA-2000 to a mobile computer, Windows Mobile 6.0

### Setting up Bluetooth® - Step 5

On the Connection Favorites Options page check the box to save as a favorite and choose a COM Port number. **Make a note of that number.** You will need to know that number to set up your LDAR software.

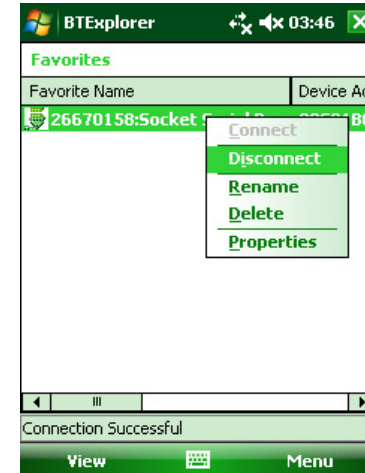
Tap Finish



### Setting up Bluetooth® - Step 6

Tap and hold on the device ID and choose **Disconnect (if currently connected)** before closing the BTExplorer and opening your LDAR management software.

Exit BTExplorer.



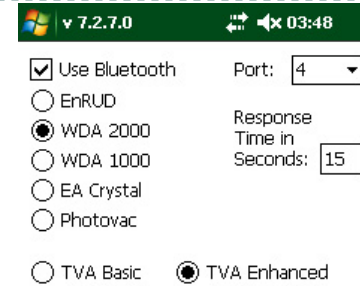
## Connecting the WDA-2000 to a mobile computer, Windows Mobile 6.0

### Setup for LeakDAS - Step 1

Open LeakDAS.

You will be asked whether you want to start the Bluetooth® connection.

For your first time **choose NO**.



### Setup for LeakDAS - Step 2

Within LeakDAS tap on the Bluetooth® icon at the bottom of the screen.



## Connecting the WDA-2000 to a mobile computer, Windows Mobile 6.0

### Setup for LeakDAS - Step 4

The checked options should be:

√ Use Bluetooth

√ WDA2000

√ TVA Enhanced

Set the port to the port number you chose.

Set response time in seconds to 15

### Setup for LeakDAS - Step 5

Quit LeakDAS to save your settings.

Restart LeakDAS and choose Yes prompted to start Bluetooth® connection. Verify that you are able to establish a connection to the TVA and get the correct readings.

